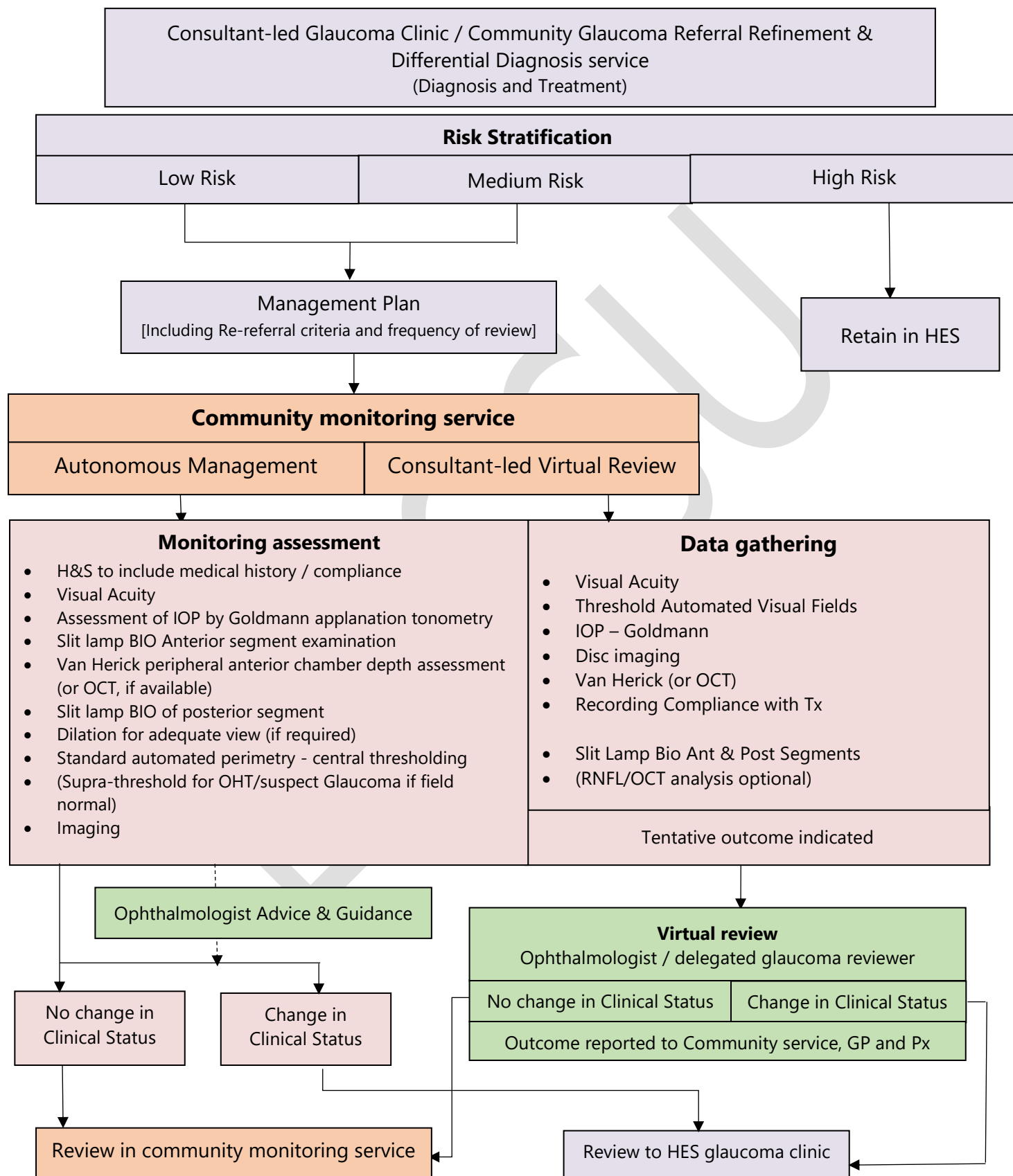


Glaucoma Monitoring Pathway

Entrance criteria: Diagnosis of Ocular Hypertension, Suspect Glaucoma or Glaucoma and considered suitable for community monitoring.



According to *Standards for Virtual Clinics in Glaucoma Care in the NHS Hospital Eye Service* (Royal College of Ophthalmologists, November 2016), the patients suitable for virtual clinic monitoring will be those deemed suitable for the service at the discretion of their referring consultant and may include those with:

- I. Ocular hypertension (OHT)
- II. Suspected open angle glaucoma
- III. Early or moderate* primary open angle glaucoma in the worse eye
- IV. Bilateral pseudophakia and a primary diagnosis of early or moderate* primary angle closure glaucoma in the worse eye

*where 'early' and 'moderate' disease stage are based on the criteria developed by Damji et al.

Patients not suitable for this service would include those in whom it is anticipated that the quality of data collected will be of insufficient reliability for the delegated glaucoma reviewer to make a safe clinical decision (e.g. unable to perform visual fields, poor disc imaging) and patients with co-existing ocular comorbidities (e.g. uveitis, age-related macular degeneration) who require monitoring of their condition.

Risk Stratification		
Low Risk	Medium Risk	High Risk
OHT/Glaucoma Suspect (No Treatment)	OHT/Glaucoma Suspect (On Treatment)	Complex Glaucomas:
Treated Primary Angle Closure Glaucoma (ONH/VF Undamaged)	Early / Moderate Primary Open Angle Glaucoma	Primary Angle Closure Glaucoma
IOP controlled	Apparently 'Stable' for 12mths	Secondary Glaucoma
	Treatment tolerated	Rare Glaucoma