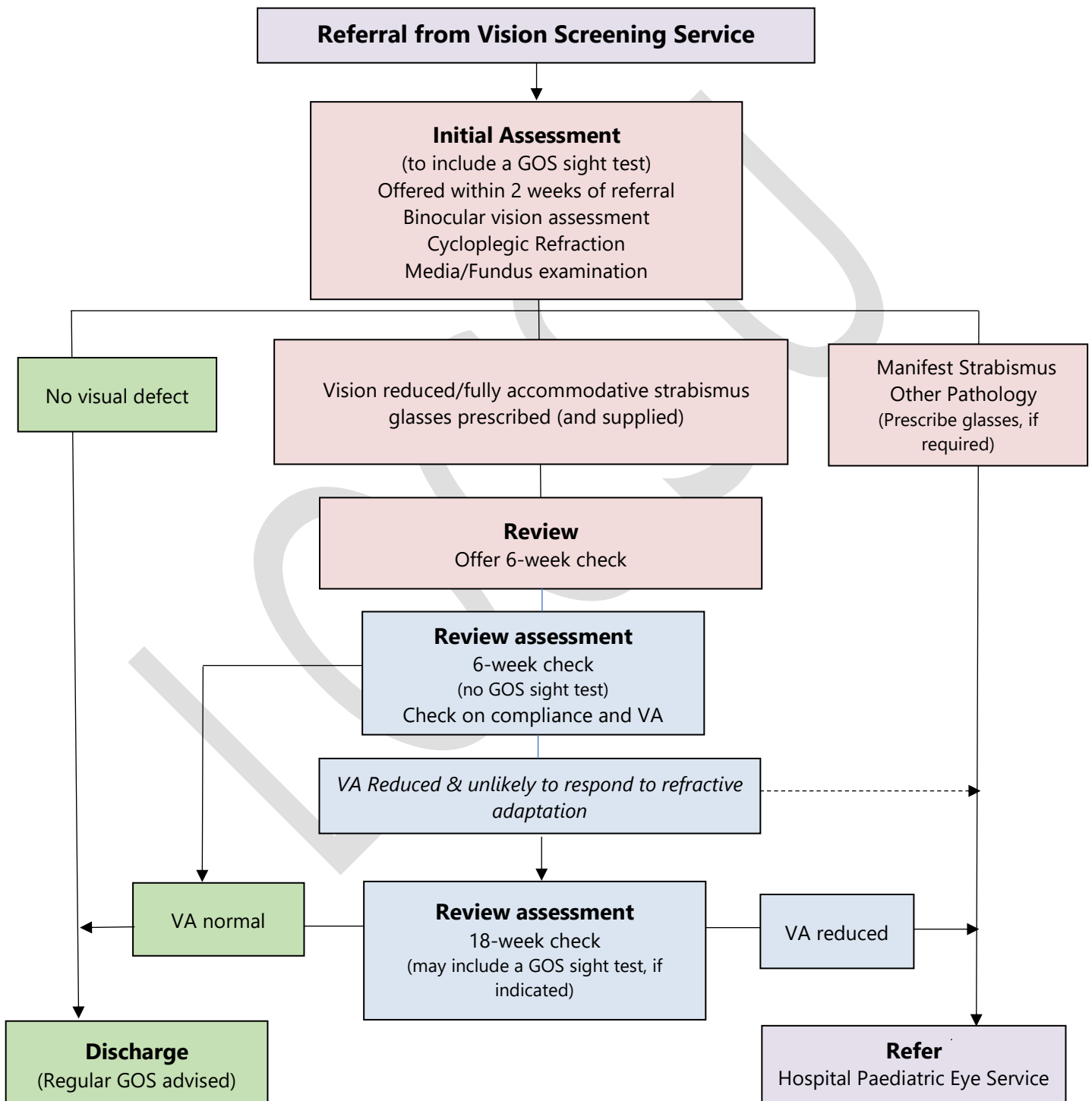


Diagnostic Pathway following Child Vision Screening

Entrance criteria: Children who are found to have reduced vision (worse than 0.20 LogMAR in one or both eyes) following vision screening and those unable to complete the test.

Children who are unable to be screened because they are absent from school or home-schooled may also be referred into the Optometry service depending on local vision screening protocols.



Upon discharge or onward referral, information is sent to the Vision Screening Service & copied to the GP.